



Gumtree Dominator

User Guide 1.0.0.2



Revision History

Revision	Date	Description
01	Jan 2014	GumtreeDominator User Guide 1.0.0.1
02	July 2014	GumtreeDominator User Guide 1.0.0.2

Contents

Page#

1 Welcome to GumtreeDominator	3
2 Select Campaign	4
3 Gumtree Scraper	
3.1 Gumtree Scraper with States	7
3.2 Gumtree Scraper with Cities	8
4 Gumtree Data	10
5 Settings	
5.1 Proxy Setting	11
5.2 Campaign Manager	12

Welcome to GumtreeDominator

With around 8 million unique visitors a month, Gumtree.com is one of the most visited sites in the UK. Gumtree registers its presence in multiple cities across numerous countries including the United Kingdom, Poland, France, Canada, Australia, New Zealand, South Africa and Hong Kong. Gumtree has the #1 classifieds site in the UK, Australia, South Africa and Singapore.

Gumtree's largest category of classifieds adverts (goods for sale) attracts up to 2 million ads being every month, along with being a preferred destination for around 200,000 motors listings across the UK any time. Gumtree is also the second largest UK listings site for jobs and the third largest for property. The site recorded 8.1 million unique visitors (as of June 2014).

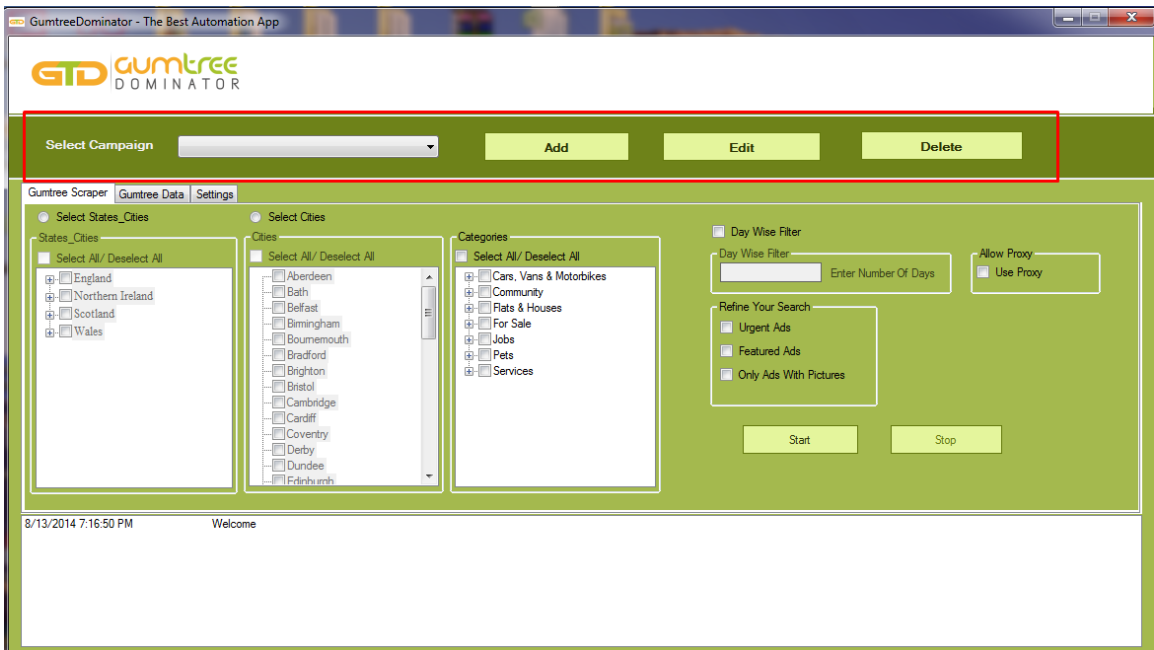
This has immense significance for a marketer trying to attract generate more traffic to its site and thereby converting the traffic to leads, leads to customers and customers to revenue.

GumtreeDominator is specially designed to get data for respective niches, so that every business gets their targeted audience easily. Data from various Gumtree categories can be easily extracted according to selected location(s) or directly scrape using URL. It allows saving data in CSV format while running your email marketing campaigns.

It's incredibly easy to configure the scraper and you can start scraping the data within minutes of installing GumtreeDominator.

2. Select Campaign

This feature is used to create, edit or delete a campaign. You would need to choose variables in this section before starting the crawlers for respective state, cities/category.



2. Select Campaign

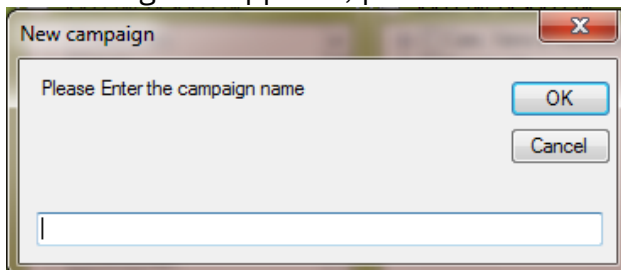
This feature is used to create, edit or delete a campaign. It has 3 operation to perform on the campaign.

2.1 Add

You can add new campaign.

How to make a campaign?

- Click on *Add* button in Select campaign
- A dialog box appears, put the name of the campaign in the box



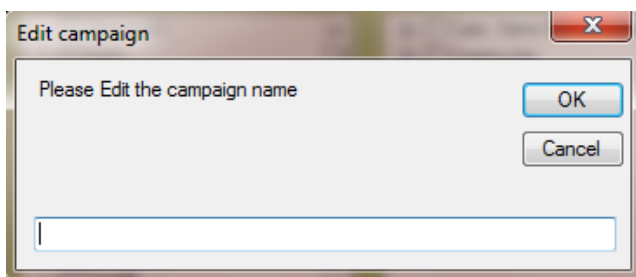
- Click on *OK*

2.2 Edit

You can edit your existing campaign using this option.

How to edit a campaign ?

- Select campaign name which you want to edit from the list
- Click on *Edit Campaign* button, it will show you a dialog box



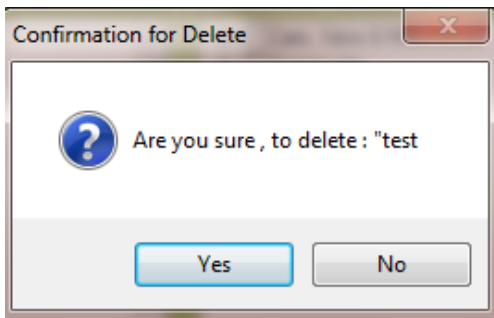
- Just type the name of new campaign, which you want
- Click on *OK*

2.3 Delete

You can delete any existing campaign from the list. Delete campaign delete all information regarding selected campaign from the list

How to delete a campaign?

- Select campaign name which you want to delete from the list
- It will show a message for confirmation to delete the selected account



- Click *Yes* for deletion of the selected campaign

3. Gumtree Scraper

3.1 Gumtree Scraper with State/City

This feature allow user to fetch all the data using Gumtree’s respective states and cities you need to go though category before starting the crawling process with selected cities.



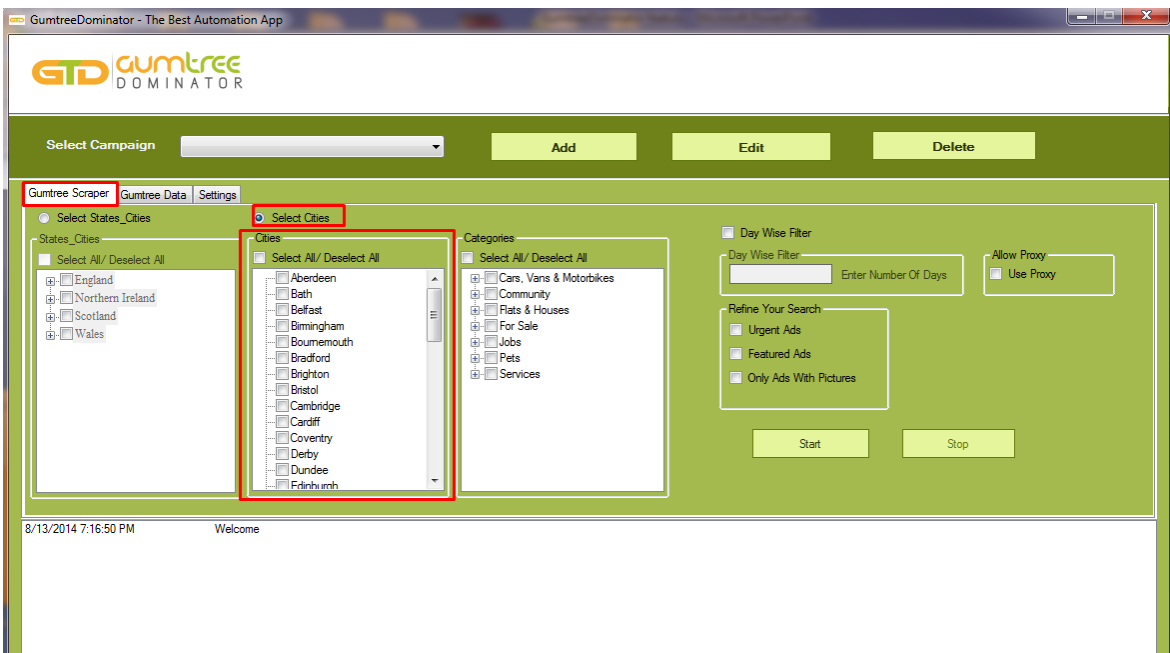
Here you can see how it works:

- Select “state/cities” option from state/cities option
- Select category from the list
- Then click on start button to scrape data

3. Gumtree Scraper

3.2 Gumtree Scraper with Cities

This feature allows you to fetch all the data using Gumtree’s respective cities you need to go through category before starting the crawling process with selected cities.



Here you can see how it works:

- Select “state_cities” option from state_cities option
- Select category from the list
- Then click on start button to scrape data

Note:

Allow Proxy

Choose *Use Proxy*, in case if want to run the above 2 process with proxy

How to load proxy?

- Click on *Allow Proxy* option



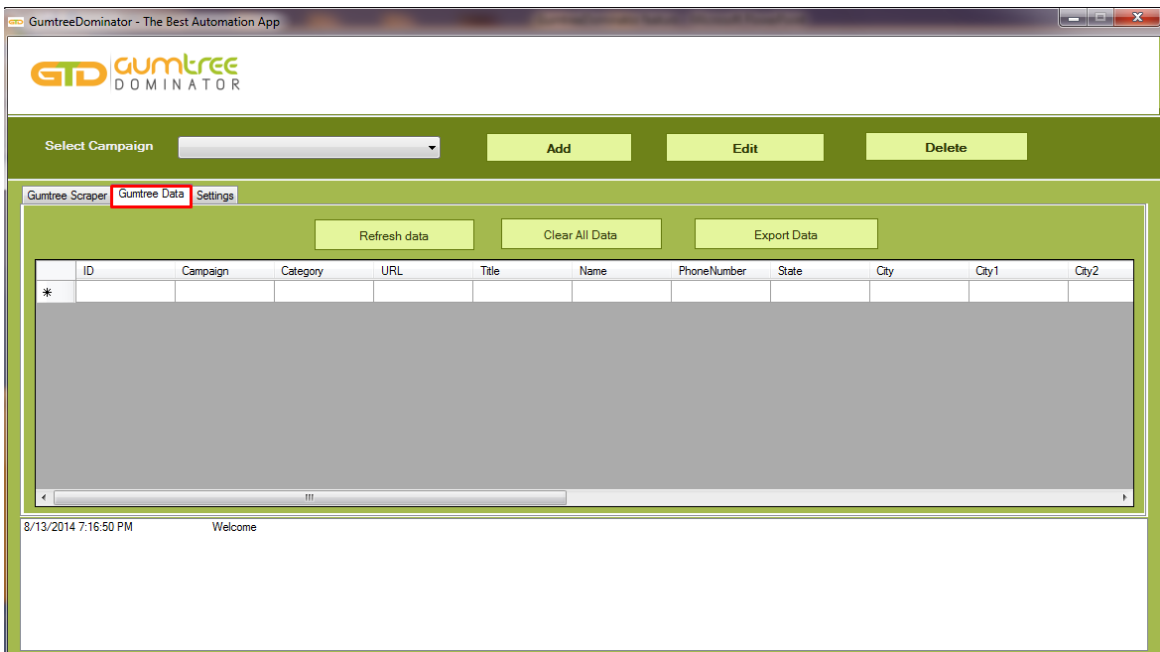
- It will redirect you in Setting → Proxy setting section



- Simply browse and upload the list of proxies.
- Click *check proxy* button for proceeding the process

4. Gumtree data

This feature stores fetched data which we have selected one of the option from “Gumtree Scraper”. User can refresh these data. User can export the data by simply clicking “Export Data” button



Here are some options available for Refresh, clear and export those all data in the CSV file.

5. Setting

5.1 Proxy setting

This feature has been added to make you IP safe and make it for long while. Proxy setting allow you to upload list of private/ Public proxies and its also checking for working IPs from the uploaded list.



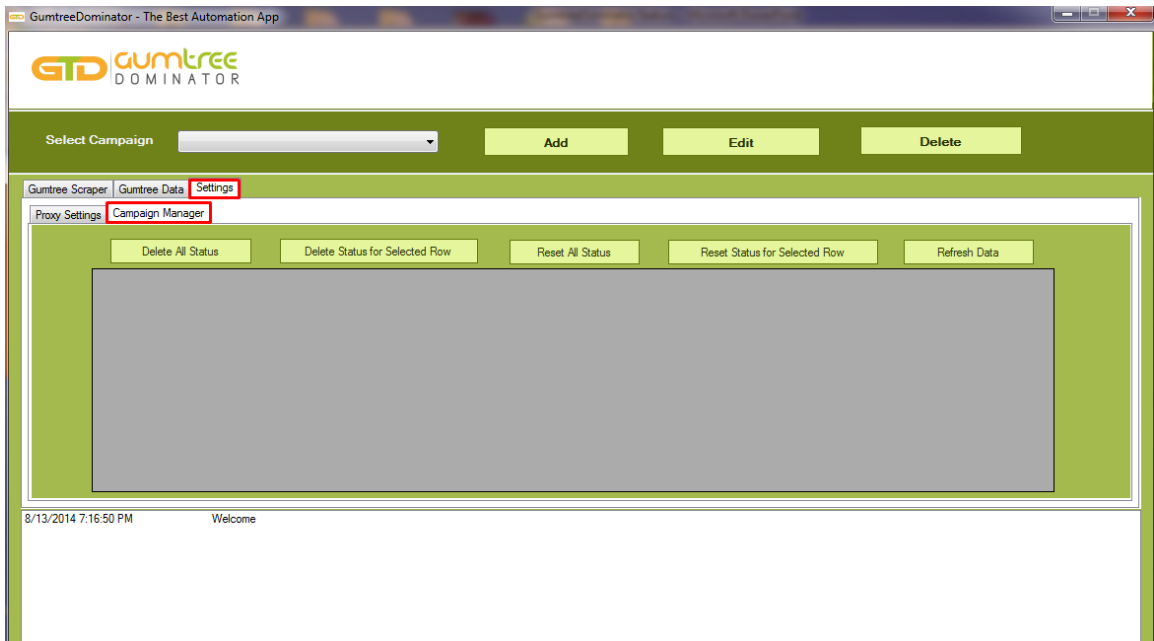
Here are the steps to check proxy:

- Simply browse and upload the list of proxies
- Click *check proxy* button for proceeding the process

5. Setting

5.2 Campaign Manager

This feature added to maintain the records regarding all campaigns and its status. Campaign manager storing data with crawling option that you have used in Gumtree Scraper and status with proper date.



Here you can delete, reset and refresh data.

Check out our other **dominators** to cater to your wide range of **digital marketing** needs!



www.facedominator.com



www.twtdominator.com



www.pindominator.com



www.craigsdominator.com



www.accountsdominator.com



www.redditdominator.com



www.gplusdominator.com

and more...

Write to us today or reach us on skype at [facedominatorsupport](https://www.skype.com/partners/facedominatorsupport).



WWW.GUMTREEDOMINATOR.COM

Need further help?

Contact us on
Skype: facedominatorsupport
Email: support@gumtreedominator.com
